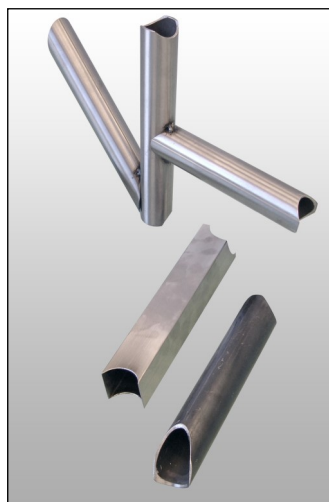


NOK 150 Pipes notcher and tubes grinding machine



Technical features:

Diameter min. / max.	20 / 150 mm.
Notching angle	15° / 90°
Abrasive belt motor	3,0 kw.
Abrasive belt size	2000x150 mm.
Weight	200 kg.
Dimensions	cm.150x70x140 H

Description:

Grinding machine suitable to execute NOTCHES and GROOVES on tubes, bars, profiles having round, square, rectangular and irregular section .

Standard machine (see picture above) is supplied with the following equipment:

- Side tilting clamping device to execute notches with 15° - 30° - 45° - 60° - 90° angles on pipes with diameters from 20 to 150 mm.;
- Working slot for horizontal grinding;
- Fix rotation speed of the grinding belt (2800 rpm)

ON REQUEST, to increase the working possibilities of the machine, some extra equipment can be attached:

- CENTRELESS EQUIPMENT for GRINDING STRAIGHT PIPES with round section (Pict. 1);

Standard equipment:

- Motors voltage 400V / 50Hz
- N. 1 contact roller for notching on a fix diameter;
- Side tilting clamping device for workpieces blocking;
- N. 2 abrasive belts in different grits;
- Adjustment wrenches;
- Instruction book

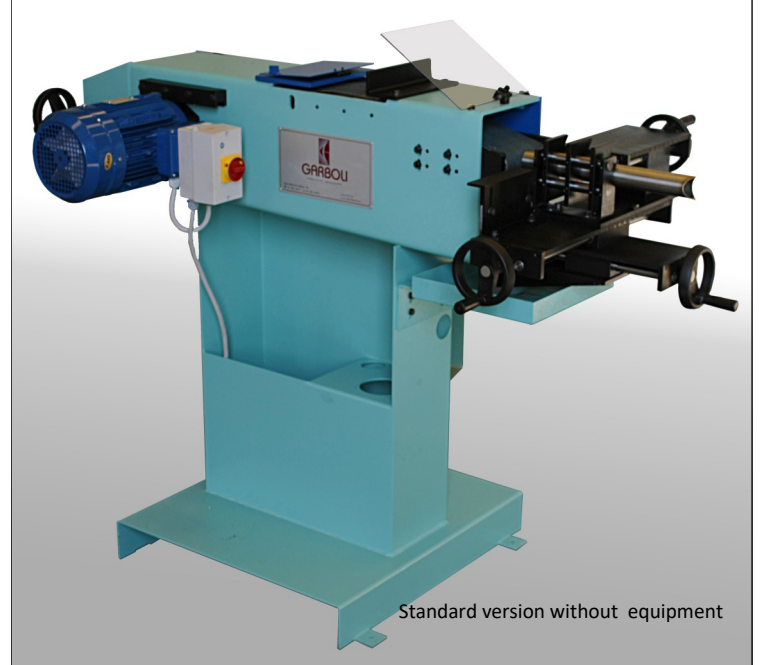
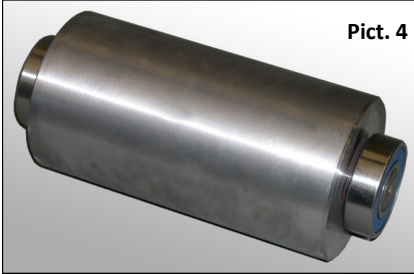
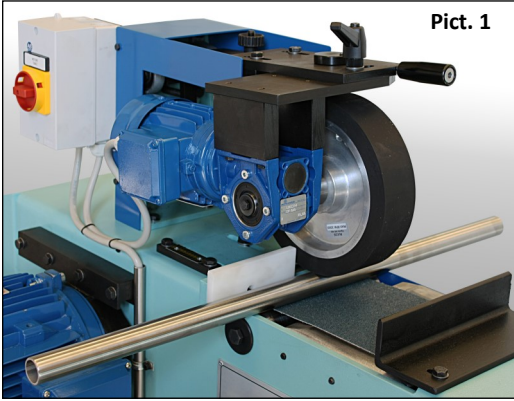
Basic machine price:

NOK 150 Belt notching machine (standard version without equipment)	€
Safety devices according to CE rules	€

* Accessori a richiesta: vedi foglio successivo

NOK 150: Equipment on request

Pict.	Code	Description	X	€	Price
1	G12.3	"Centreless" equipment for straight pipes with round section		€	
2	G12.4	Kit for "wet" processing		€	
3	G12.5	Double rotation speed of the abrasive belt (1400-2800 rpm.)		€	
4	G12.2A	Contact roller for dia. 20 - 40 mm. (n°1 for each different diameter)		€	
4	G12.2B	Contact roller for dia. 41- 60 mm. (n°1 for each different diameter)		€	
4	G12.2C	Contact roller for dia. 61- 110 mm. (n°1 for each different diameter)		€	
4	G12.2D	Contact roller for dia. 111 - 150 mm. (n°1 for each different diameter)		€	



Sales terms:

Teslim zamanı	30/40 gün
Teslim yeri	Ex-works Garboli fabrika
Paketleme	Ağaç palet
Kdv	-
Ödeme	25% sipariş ile; 75% yükleme ile



Abdi İpekçi Cad.Çizmeci İş Merkezi No:87/107
 Bayrampasa-ISTANBUL-TURKEİ
 Tel: 0212 576 25 37 Fax: 0212 549 43 62
 Gsm: 05326180790 www.akes.com.tr