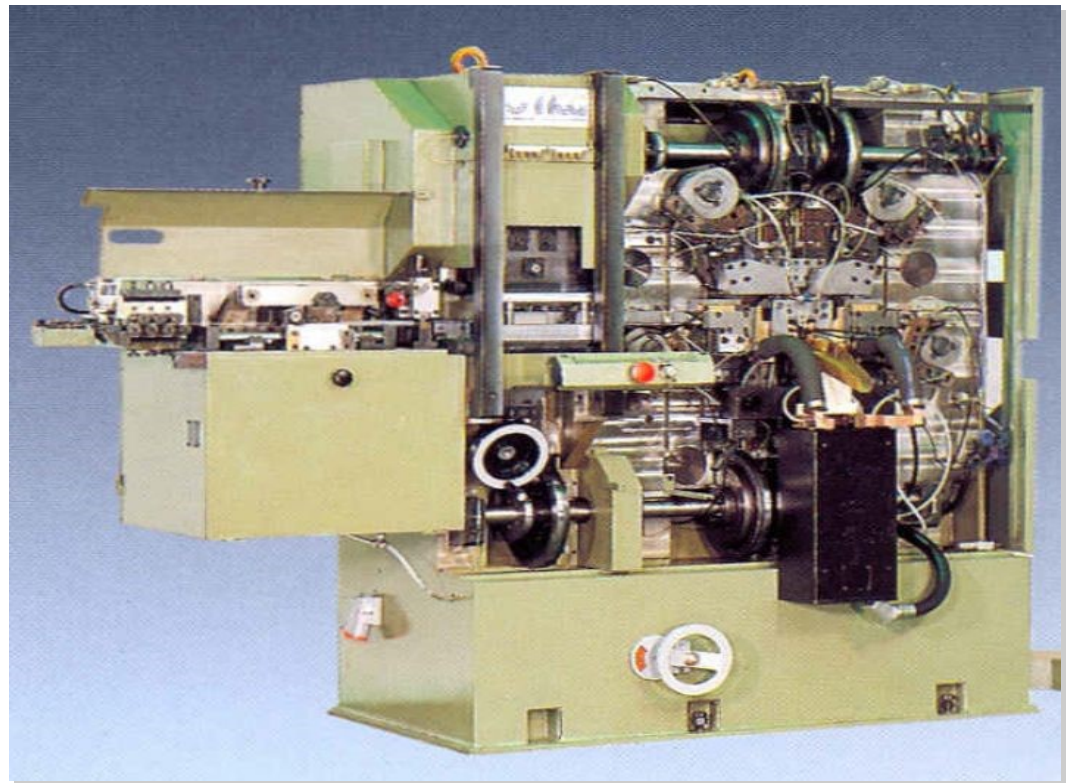


Mechanical series

**MULTI-SLIDE
BENDING
MACHINE FOR
WIRE AND
TUBE**



PGU

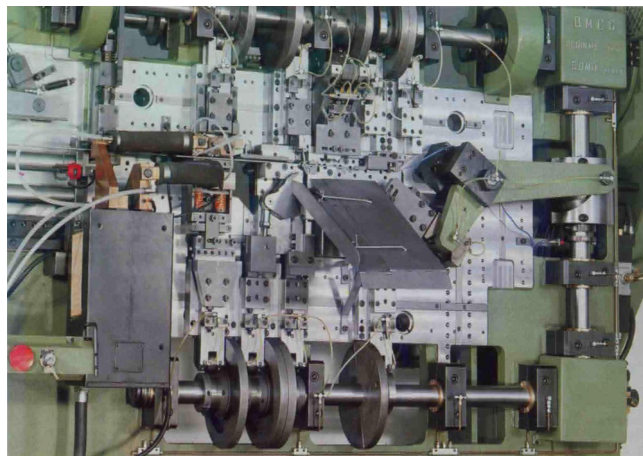


- ✓ **FAST**
- ✓ **STURDY**
- ✓ **HIGHEST REPEATABILITY**
- ✓ **BEST ACCURACY**
- ✓ **HIGH QUALITY MECHANICAL WORKING**

Technical data

MODEL	PGU 250	PGU 530	PGU1200	PGU1400
Feeding from 0 to	250 mm (9.84 in)	630 mm (24.8 in)	1200 mm (47.25 in)	1400 mm (55.12 in)
Wire \varnothing up to (at 600 N/mm ²)	5 mm (0.2 in)	8 mm (0.31 in)	8 mm (0.31 in)	8 mm (0.31 in)
Strip length	20 mm (0.8 in)	25 mm (1.0 in)	25 mm (1.0 in)	25 mm (1.0 in)
Strip width	2 mm (0.08 in)	2 mm (0.08 in)	3 mm (0.12 in)	3 mm (0.12 in)
Working speed	45-220 strokes/minutes	23-115 / 40-200 strokes/minutes	21-105 strokes/minutes	3-105 strokes/minutes
Rated power	2.25 kW	3 kW	4 kW	4 kW
Power supply (EU/US)*	400 V 3-ph+N 50 Hz / 460 V 3-ph+N 60 Hz			
Net/Gross weight	1400 /1560 kg (3087/3439 LB)	4500/4800 kg (9921/10582 lb)	4650/5150 kg (10252/11354 lb)	5580/6180 kg (12302/13625 lb)
Machine dimen- sions without decoiler (LxWxH)	2400x980x1860mm (94x39x73 in)	3670x1200x2000mm (144x47x78 in)	4850x1200x2030mm (144x47x80in)	5800x2200x2100mm (228x87x83 in)
Machine dimen- sions with decoiler (LxWxH)	5300x980x1860mm (209x39x73 in)	5670x1200x2000mm (227x47x78 in)	6830x1200x2030mm (269x47x80 in)	8000x2200x2100mm (315x87x83 in)
Bending slides (of which 3D)	up to 8 (1)	up to 14 (1)	up to 16 (2)	up to 20 (2)
Rear motions	up to 4	up to 6	up to 6	up to 10

* other options available on request



Bending and forming area detail

Options available on request:

- NC feeding
- Additional feeding (front, rear and right)
- Press
- Welding units
- Rolling units
- Chamfering units
- Punching units
- Twisting units
- Custom units



Example of press on PGU machines

The machine is shown without safety barriers for display purposes.

The manufacturer reserves the right to alter any information and/or picture provided in this brochure without notice.

