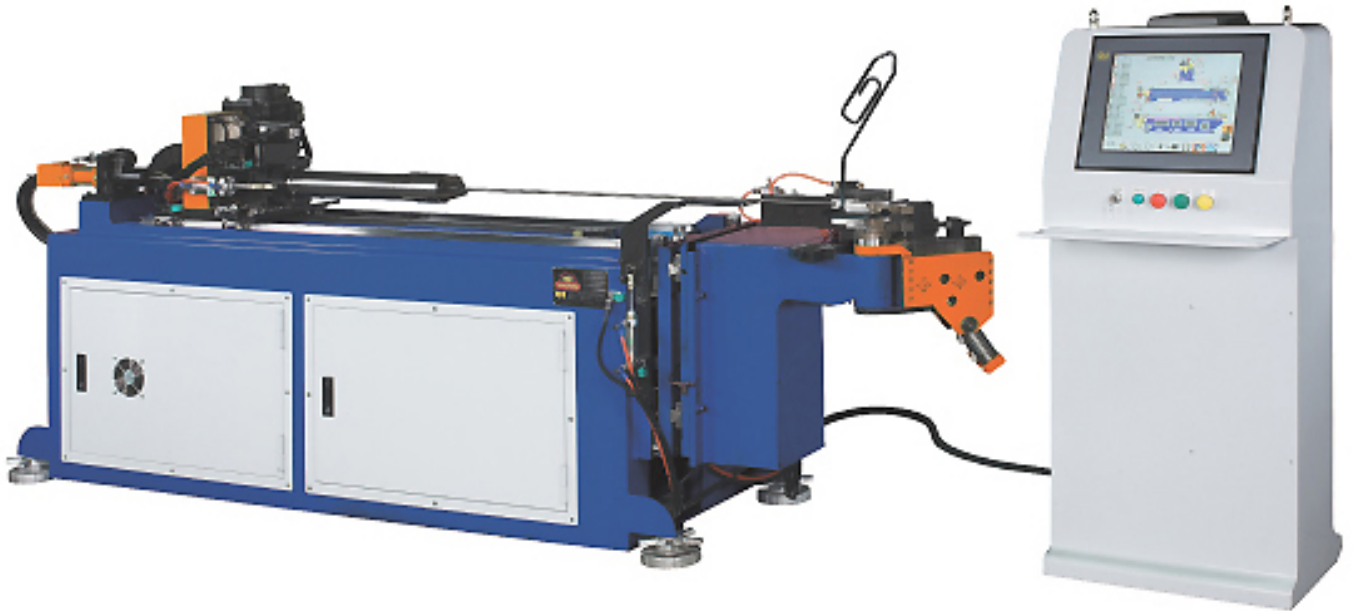


CNC BENDER – CNC16BR3

(4 AXES 3 STACKS)



4 AXES SERVO SUPPRT including pipe feeing, turning, bending & bending arm right/left shift to make sure necessary accuracy concern.

FEATURE:

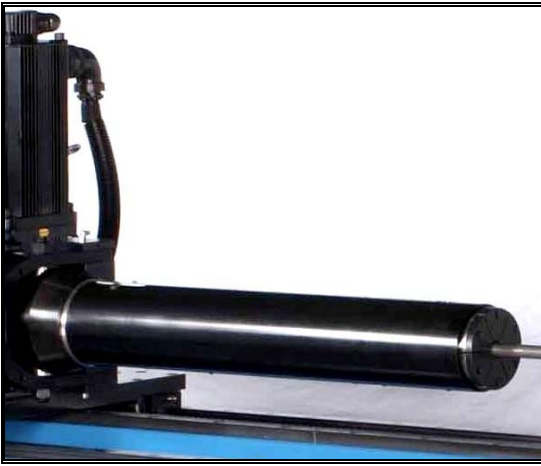
旭東
SHUZ TUNG
旭東機械工業股份有限公司
Shuz Tung Machinery Industrial Co., Ltd

TEL:886-4-26831886 E-MAIL:stmc@shuztung.com.tw
FAX:886-4-26836158 www.shuztung.com
NO.17-1 Hou-Liao Road, Waipu, Taichung, Taiwan.

SHUZ TUNG

LCD TOUCH SCREEN:

- A. 17" color touch screen with Chinese, English display. (Multiple languages for options)
- B. Adopts PC based 6 axes controller for user-friendly programming. Operator can control from WIM XP directly.

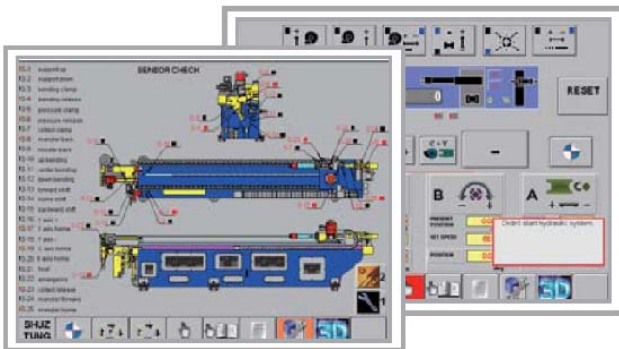


COLLET CHUCK:

- A. The collet chuck is a 4 piece quick release type and is available open type for various shapes of tubes.
- B. Repetitive feeding without using a mandrel means free limitation of length.

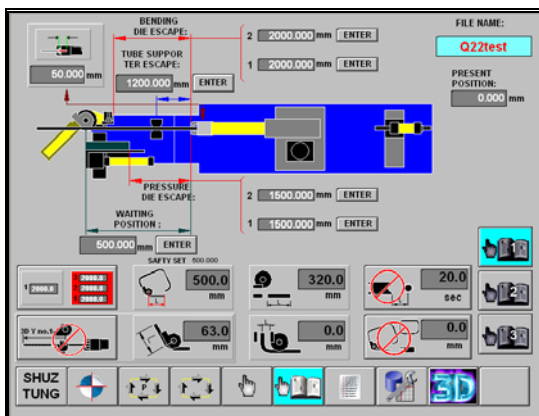
ERROR MESSAGE:

Error description and flashing alarm on abnormal operational section offer critical information for instant trouble shooting.



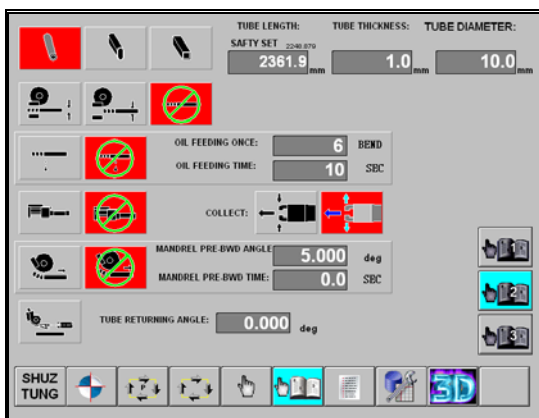
PARAMETER LIST:

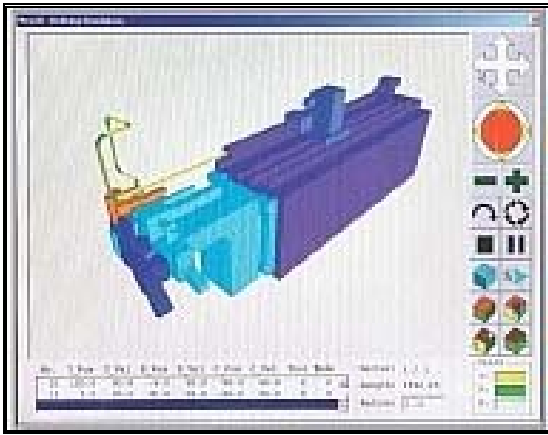
- A. Able to set up spring back compensation.
- B. Able to set up parameters of unmandrelling, booster, mandrel lubrication and spring back angle.
- C. Able to set up production quantity.



SPECIFICATION:

- A. Tube information, die specifications and machine settings can be saved for reference.
- B. With contrastive table for programs, tubes and dies for easy identification.
- C. Data can be stored in HD or USB drive, The PC is equipped with 40GB memory and is able to be expanded upon request.





3D SIMULATION:

3D simulation can execute programs without actual operations thereby saving costs.

SPECIFICATION

HORSE POWER	11HP
MAX. BENDING CAPACITY	Ø16 x1.2MM
MAX. BENDING RADIUS	80MM
MAX. BENDING ANGLE	190°
LENGTH OF MANDREL	1200MM
BENDING SPEED	214°/SEC
BENDING ACCURACY	± 0.05°
FEEDING SPEED	1-1200MM/SEC.
FEEDING ACCURACY	± 0.1MM
TURNING SPEED	360°
TURNING ACCURACY	± 0.1°
TOTAL MOLD HEIGHT	120MM
RADIUS DIFFERENCE BETWEEN STACKS	25MM
DIMENSION (CM)	280 x 85 x 120
WEIGHT (KG)	1800